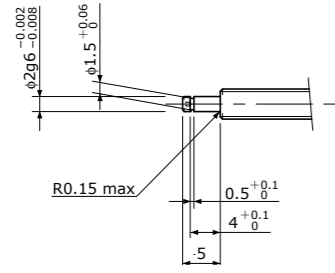


● 标准库存品 / Standardized end-journal profile

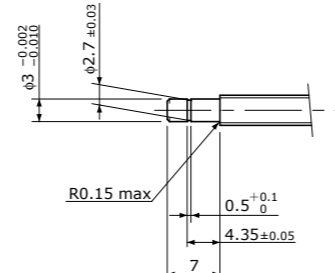
KSS 支架组件均设计为可以安装到 KSS 微型滚珠丝杠的标准形状轴端上。KSS 标准轴端形状及其对应的 KSS 支架组件的一览表如下所示。

KSS Support Units are designed to fit standard end-journal profile of KSS Miniature Ball Screws. Table below shows KSS Support Units list corresponding to standard end-journal profile.

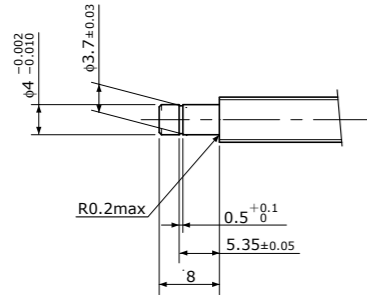
【支撑侧 / Supported side】



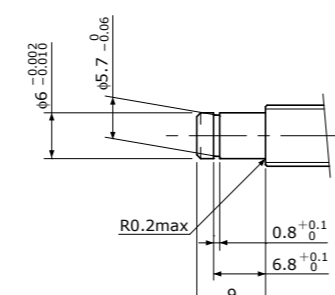
Brg. Inner dia. 轴承内径	Support Unit model 适用的支架组件
f2	MSU-3CS / MSU-3GS



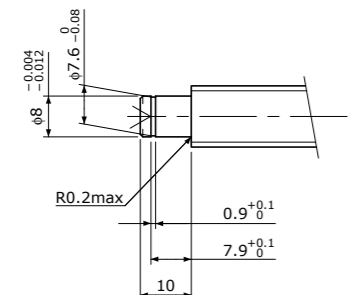
Brg. Inner dia. 轴承内径	Support Unit model 适用的支架组件
f3	MSU-4CS / MSU-4GS, SUP03-S



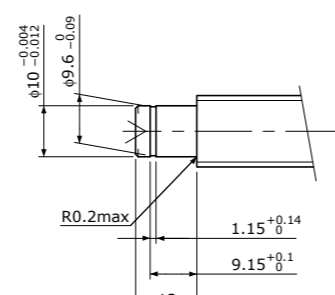
Brg. Inner dia. 轴承内径	Support Unit model 适用的支架组件
f4	MSU-5CS / MSU-5GS, SUP04-S



Brg. Inner dia. 轴承内径	Support Unit model 适用的支架组件
f6	MSU-6CS / MSU-6GS, EF6 MSU-8CS / MSU-8GS, EF8

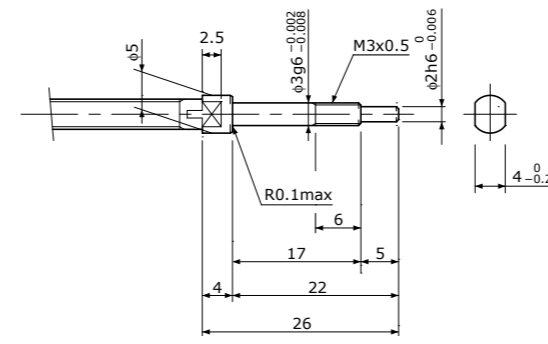


Brg. Inner dia. 轴承内径	Support Unit model 适用的支架组件
f8	EF10

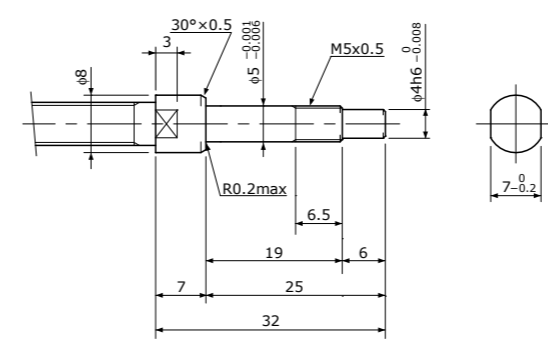


Brg. Inner dia. 轴承内径	Support Unit model 适用的支架组件
f10	EF12

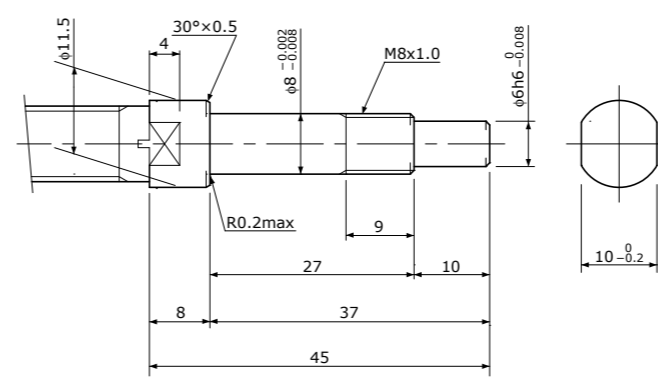
【固定侧 / Fixed side】



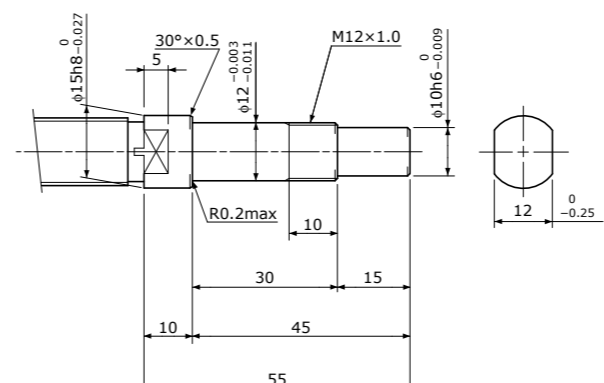
Brg. Inner dia. 轴承内径	Support Unit model 适用的支架组件
f3	MSU-3C / MSU-3G



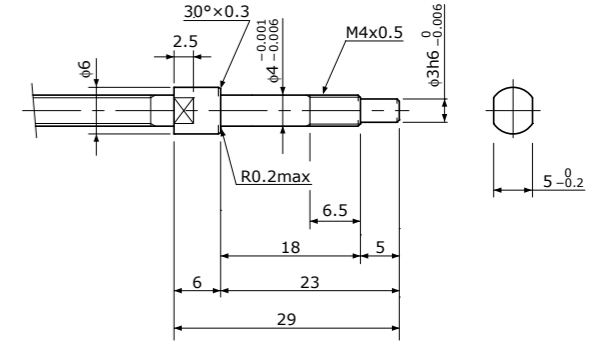
Brg. Inner dia. 轴承内径	Support Unit model 适用的支架组件
f5	MSU-5C / MSU-5G, EK5



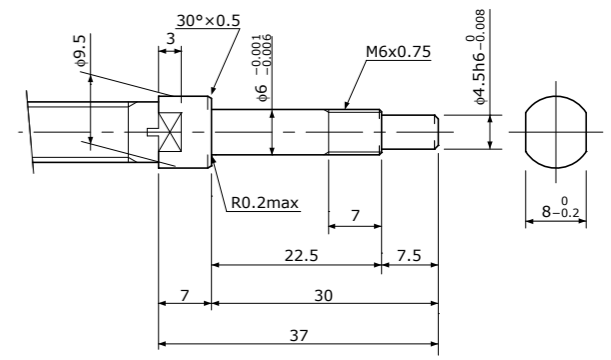
Brg. Inner dia. 轴承内径	Support Unit model 适用的支架组件
f8	MSU-8C / MSU-8G, EK8



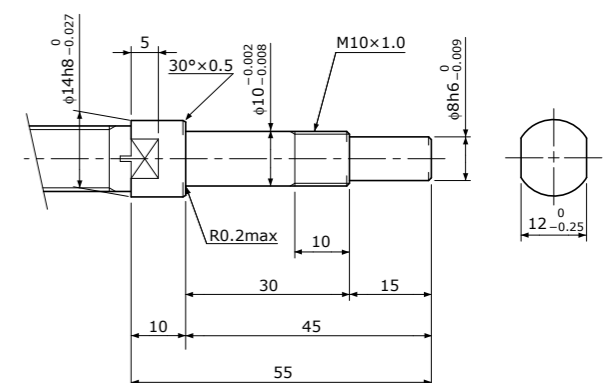
Brg. Inner dia. 轴承内径	Support Unit model 适用的支架组件
f12	EK12



Brg. Inner dia. 轴承内径	Support Unit model 适用的支架组件
f4	MSU-4C / MSU-4G, EK4



Brg. Inner dia. 轴承内径	Support Unit model 适用的支架组件
f6	MSU-6C / MSU-6G, EK6

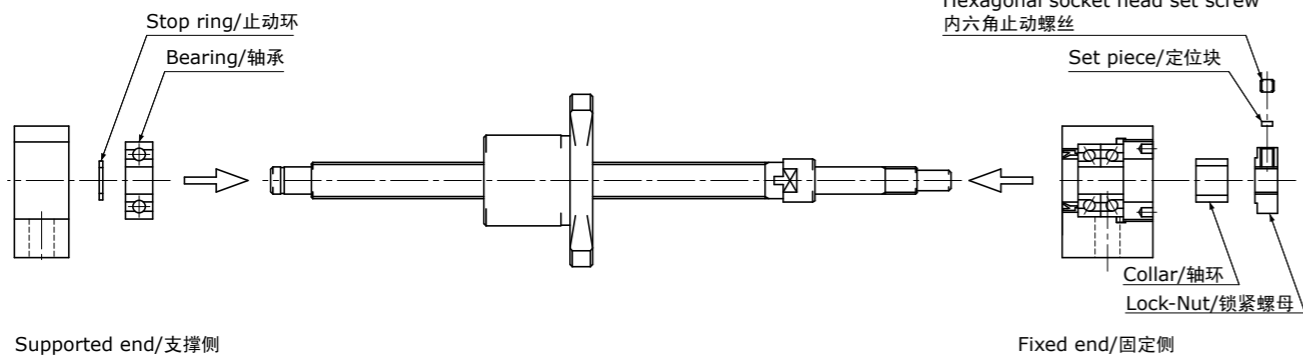


Brg. Inner dia. 轴承内径	Support Unit model 适用的支架组件
f10	EK10

● 安装步骤 / Mounting procedure

1. 支架组件的组装

- 1) 将固定侧支架组件组装在滚珠丝杠上。
注1) 请勿拆分支架组件。
注2) 将轴插入支架组件后, 请用锁紧螺母进行紧固, 避免定位块翘起。
- 2) 插入固定侧支架组件后, 用锁紧螺母进行紧固, 并通过定位块、内六角止动螺丝进行固定。
- 3) 组装支撑侧轴承, 用止动环固定后装入外壳。



1. Assembling Support Unit

- 1) Mount the fixed end Support Unit onto the Ball Screw.
Note 1) Do not disassemble the Support Unit.
Note 2) Tighten the Lock-Nut after inserting the Shaft into the Support Unit, and make sure that the set piece is not allowed to curl.
- 2) Tighten the Lock-Nut after inserting into the fixed end Support Unit, and secure using the set piece and hexagonal socket head set screw.
- 3) Mount the supported end Bearing, secure with the stop ring, and fit into the Housing.

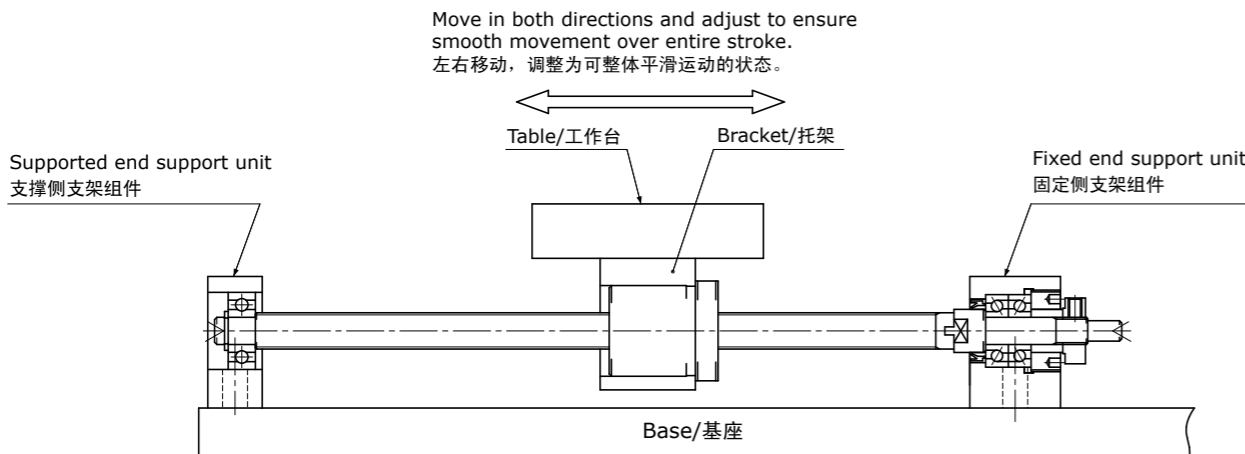
2. 工作台和滚珠丝杠螺母的组装

以及组件和基座的安装

- 1) 将滚珠丝杠螺母插入工作台(使用托架时插入托架)后临时固定。
- 2) 将固定侧支架组件临时固定到基座上。
注1) 此时, 请将工作台靠近支架组件侧进行定心, 并将工作台调整到可平滑移动的状态。

2. Mounting the table on the Ball Screw Nut and mounting the Support Unit on the base

- 1) Insert the Ball Screw Nut into the table, or, when using Brackets to attach the table to the Ball Screw Nut, insert into the Bracket, and loosely tighten.
- 2) Loosely secure the fixed end Support Unit to the base.
Note 1) Move the table toward the Support Unit and center it. Adjust to ensure that the table moves smoothly.

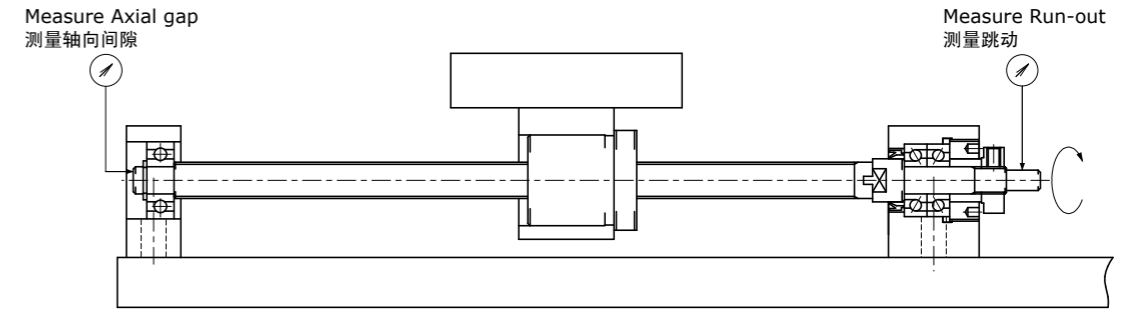


3. 支撑侧外壳和基座的安装及精度确认

- 1) 将工作台靠近支撑侧外壳并进行定心, 然后使工作台往复运动, 将其调整到整体可平滑运动的状态, 然后临时固定到基座上。
- 2) 通过千分表确认滚珠丝杠轴端的跳动、轴向间隙, 同时切实紧固螺母、固定侧支架组件及支撑侧外壳。

3. Mounting the supported end Housing on the base and checking accuracy

- 1) Move the table toward the supported end Housing and center it. Move the table in both directions and adjust to ensure smooth movement over entire length. Secure loosely to the base.
- 2) Check the Run-out and Axial gap at the Ball Screw Shaft end using a dial gauge, and fully tighten the Nut, fixed end Support Unit and supported end Housing.

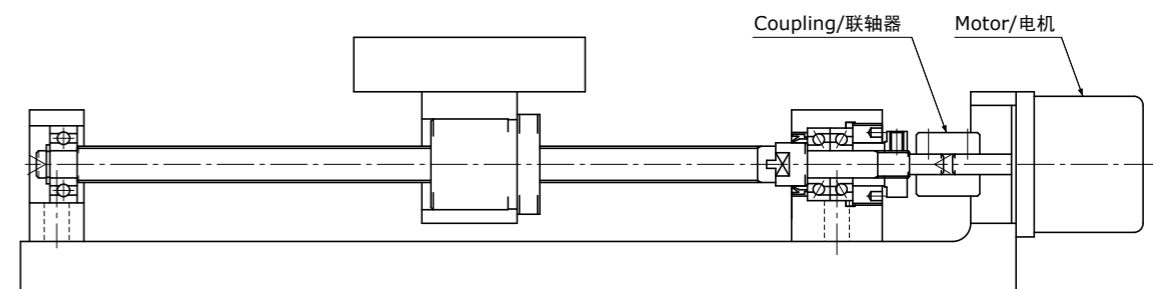


4. 与电机的连接

- 1) 将电机固定到主体上。
- 2) 通过联轴器连接电机和滚珠丝杠。
- 3) 请进行充分的磨合运行。

4. Connecting to the Motor

- 1) Secure the Motor to the main Unit.
- 2) Connect the Motor to the Ball Screw using the coupling.
- 3) Run in thoroughly.



注) 上述内容为枕型、块型的安装步骤, 法兰型也请按相同要领进行安装。

Note) Instruction above is for Pillow type and Block type Support Units, In case of Flange type Support Units, the same procedure can be applicable.